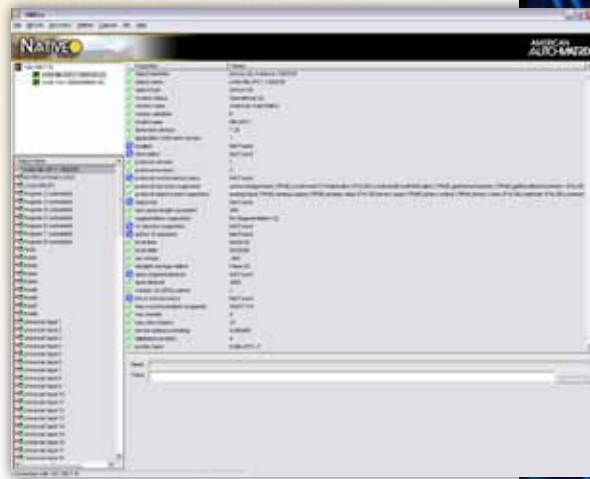


DESCRIPTION

NB-Pro, American Auto-Matrix's Windows® based commissioning utility, allows end-users to manage and configure AAM's Native Series devices, as well as third-party BACnet MS/TP Devices. Utilizing standard Microsoft point-and-click navigation, NB-Pro displays device objects and properties in a concise environment easily understandable to any user. NB-Pro connects to a BACnet MS/TP network via NB-Link – a BACnet MS/TP device designed for managing time-crucial communications between the user-interface and the MS/TP network.

FEATURES

- Commissioning and flash updating accomplished through IP or serial communications (AspectFT Matrix; Matrix-BBO; NB-Link)
- Flash firmware updates to AAM Native Series devices with built-in flash utilities
- SPL Editor used to create and compile custom application sequences for NB-GPC devices
- Comprehensive list of Object and Property References for all AAM Native Series BACnet devices
- Manual Read / Write feature allows users to access proprietary properties of device programs, as well as third party BACnet devices
- Archival of Native Series device programming via capture utilities
- Report generation features which allow users to create configuration reports from capture files
- Configuration management of NB-Link communications device
- Intuitive utilities such as Trend Viewer, Alarm Viewer, and BACnet Error Viewer for advanced troubleshooting and commissioning readings
- Group screens allow the user to monitor a collection of related properties from different controllers in a single window



FEATURES

AspectFT Matrix Area Controller

Through use of the AspectFT Matrix Area Controller, NB-Pro provides users and technicians the ability to setup, configure and commission NB Family controllers utilizing BACnet over IP. Provided that the correct communication ports are opened or forwarded properly through network equipment such as routers and firewalls, connectivity to devices can be established across Wide Area Network (WAN) connections common on large campuses, enterprise installations, and even Internet connections.



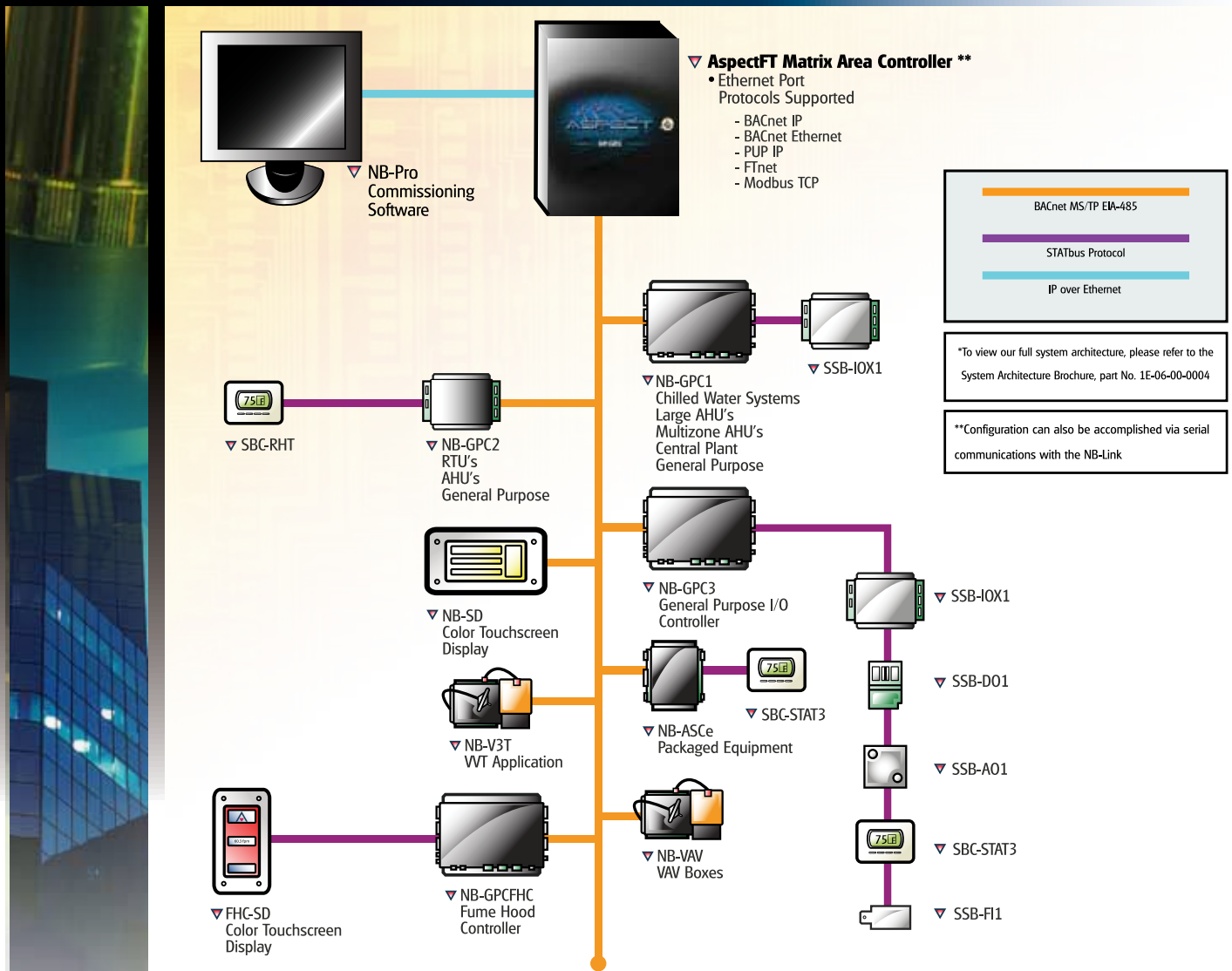
¹ This product conforms to BTL standards when configured as a BACnet router

NB-PRO

BACnet MS/TP - Based Commissioning Utility

AMERICAN
AUTO-MATRIX®
 SMART BUILDING SOLUTIONS®

CONFIGURATION ARCHITECTURE



SPECIFICATIONS - NB-PRO v.2

PC Requirements

- 500Mhz Intel Pentium III Processor (minimum)
- 256MB RAM
- Microsoft Windows 2000 or XP

Additional Software

- Sun Microsystems, Inc.
- JAVA 2 Runtime Environment (version 1.3 or higher)
- Microsoft Internet Explorer (version 5.0 or higher)
- Netscape Navigator (version 6.0 or higher)
- Mozilla Firefox (version 1.0 or higher)

Communications

- Baud Rates: 9.6, 19.2, 38.4, 57.6, 78.6 kbps

SPECIFICATIONS - NB-LINK

Power Requirements

- External adapter included as 110 VAC - 230 VAC available, inquire at 1-877-AAM-HVAC
- Required input power of 9-30VDC @ 250mA max

Operating Environment

- operating temperature: 5 to 50°C (41 to 151°F)
- storage temperature: -40 to 66°C (-40 to 151°F)
- relative humidity: 10% to 90% noncondensing, 40% to 60% recommended

American Auto-Matrix is a Service-Disabled Veteran-Owned Small Business / Woman-Owned Business (CCR Cage #4LL80)

One Technology Lane Export, Pennsylvania 15632-8903 U.S.A Tel (1) 877-AAM-HVAC Fax (1) 724-327-6124

Email: aam@aamatrix.com On the Web: www.aamatrix.com

